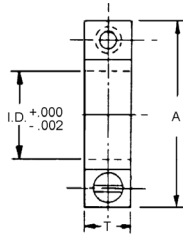
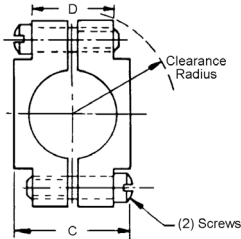


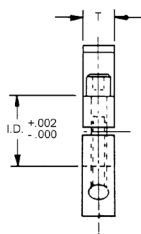
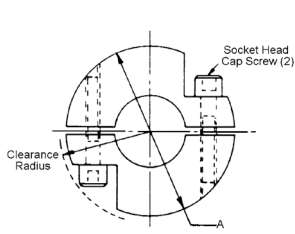
SPLIT HUB CLAMPS

SHAFT SIZE	TYPE	MATERIAL
1/8" TO 3/8"	BALANCED CLAMP	416 STAINLESS STEEL AND 303 STAINLESS STEEL



STOCK NO.	MATERIAL	INSIDE DIA.	T	A	C	D	SCREW	SPLIT HUB CLEARANCE RADIUS	INSIDE DIA. (Ref.)
CG2-7	416 STAINLESS STEEL	.187	.156	.500	.286	.176	#2-56	9/32	1/8
CG2-8		.250	.187	.590	.350	.235	#3-48	11/32	3/16
CG2-9		.312	.187	.687	.420	.286	#4-40	13/32	1/4
CG2-10		.375	.187	.781	.510	.336	#4-40	15/32	5/16
CG2-11		.437	.250	.890	.636	.365	#6-32	35/64	3/8
CG2-27	303 STAINLESS STEEL	.187	.156	.500	.286	.176	#2-56	9/32	1/8
CG2-28		.250	.187	.590	.350	.235	#3-48	11/32	3/16
CG2-29		.312	.187	.687	.420	.286	#4-40	13/32	1/4
CG2-30		.375	.187	.781	.510	.336	#4-40	15/32	5/16
CG2-31		.437	.250	.890	.636	.365	#6-32	35/64	3/8

SHAFT SIZE	TYPE	MATERIAL
1/8" TO 1/4"	BALANCED CLAMP	303 STAINLESS STEEL OR 2024 ALUMINUM ANODIZED



STOCK NO.	MATERIAL	INSIDE DIA.	T	A	SCREW	SPLIT HUB CLEARANCE RADIUS	SPLIT HUB INSIDE DIA. (Ref.)
CG2-12-S	STAINLESS STEEL	.125	.156	.562	#2-56	25/64	-
CG2-12-A	ALUMINUM	.125					-
CG2-13-S	STAINLESS STEEL	.188					1/8
CG2-13-A	ALUMINUM	.188					1/8
CG2-15-S	STAINLESS STEEL	.250					3/16
CG2-15-A	ALUMINUM	.250					3/16
CG2-14-S	STAINLESS STEEL	.188	.250	.875	#6-32	33/64	1/8
CG2-14-A	ALUMINUM	.188					1/8
CG2-16-S	STAINLESS STEEL	.250					3/16
CG2-16-A	ALUMINUM	.250					3/16
CG2-17-S	STAINLESS STEEL	.313					1/4
CG2-17-A	ALUMINUM	.313					1/4